

pGCMS - 3035

Portable Gas Chromatography Mass Spectrometry



EPCC / PRODUCTS / APPLICATION / SOFTWARE / ACCESSORIES / CONSUMABLES / SERVICES

Analytical Technologies Limited

An ISO 9001 Certified Company

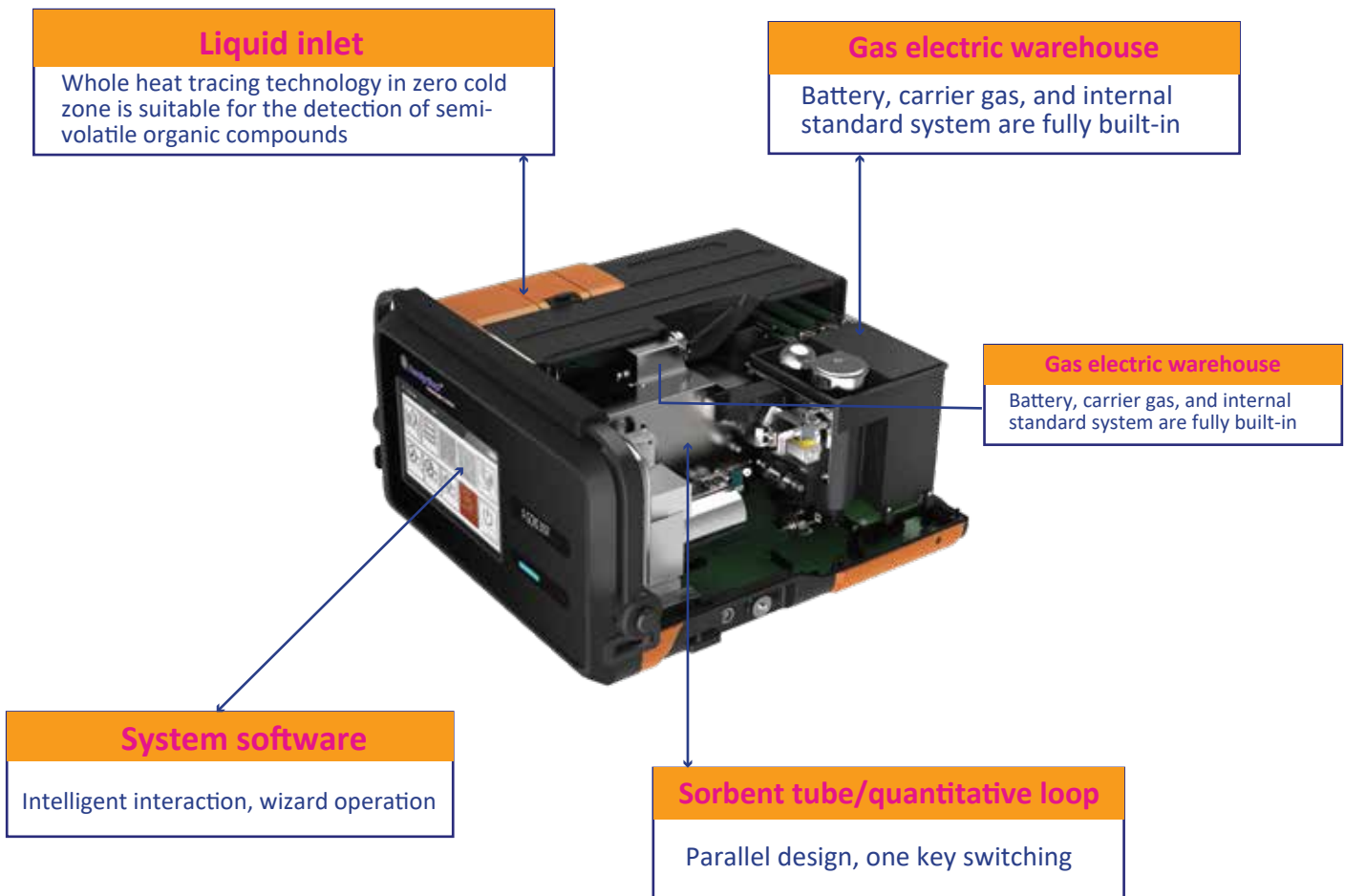
www.analyticalgroup.net

Product Introduction :

The new generation of 3035 portable gas chromatography-mass spectrometry (GC-MS) is a portable device for rapid qualitative and quantitative analysis of on-site organic matter, which can be used for rapid qualitative and quantitative analysis of volatile organic compounds (VOCs) in the atmosphere, water and soil, as well as semivolatile organic compounds (SVOCs) in pesticides, drugs and explosives. At present, it is widely used in emergency monitoring, environmental monitoring, disease control, public security criminal investigation, fire control and other fields. pGCMS - 3035 has excellent environmental adaptability and meets the needs of customers to obtain accurate analysis results in real time. It is an ideal on-site organic analysis expert!

Technical Parameter :

- The equipment is highly integrated, and the ultimate field portability



- Waterproof, dustproof and earthquake-resistant, strong environmental adaptability

The equipment is designed to be dustproof, waterproof and earthquake-resistant, fearless of the harsh environment challenges on site.



- Multiple application methods, comprehensive scene applicability

- Single/double shoulder

The whole machine is less than 19kg, and can be carried by one person, allowing you to easily reach the core area to obtain reliable on-site results.



- Portable mode

On-site monitoring trolley integrated power module, shock-absorbing design, assists sensitive point inspection, and saves on-site inspection and effort.



- Vehicle carry mode

The equipment can be quickly fixed to the shock-absorbing platform in the mobile inspection vehicle and complete the boot warm-up, fearless of complicated road conditions, and start working immediately after arriving at the scene.



- Offline sampling

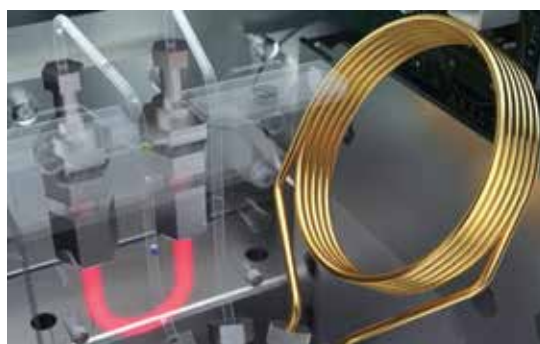
For dangerous areas, drones are used for remote sampling, and Portable GC can be used for on-site analysis directly after sampling.



Multiple sampling modes, one machine with multiple functions and full configuration

- Sorbent tube/quantitative loop injection

The built-in inert quantitative loop and adsorption tube can directly inject and analyze high and low concentration VOCs samples.



- Directly MS injection

The second-level response realizes the rapid positioning of pollutants, and there is no vacuum constraint, which can be used continuously for rapid screening.



- Headspace injection

It is mainly used for the detection of volatile organic compounds in water and soil, and can also be used for the detection of other material matrices



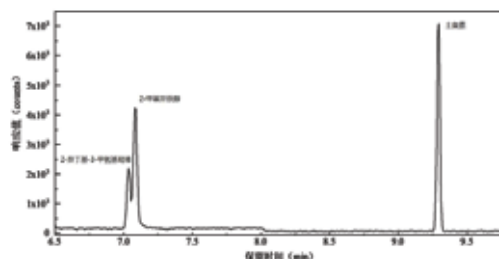
- Needle injection/SPME injection

Combined with liquid injection port, it is mainly used for the detection of semi-volatile organic compounds in drugs, water, soil and other matrices.



A variety of scanning modes, the sensitivity is greatly improved

The product has full scan mode, selected ion scan mode and MS/MS scan mode, in which the detection limit of geosmin and 2-methylisocanthol is less than 10ppt.



Intelligent software, wizard operation

Intelligent interaction, no need for professional technical background to become an on-site organic analysis expert.



Emergency monitoring

Rapid response and accurate quantification can be achieved through the single mass spectrometry injection mode and gas chromatography mass spectrometry injection mode, and the on-site situation can be grasped at the first time to assist scientific decision-making.



Environmental monitoring

One-button switching to analyze trace VOCs in ambient air and ultra-high concentration VOCs in pollution sources. In addition, the VOCs and SVOCs in water and soil can be qualitatively and quantitatively analyzed through headspace and solid-phase microextraction comprehensive pretreatment equipment.



Criminal investigation

Through gas chromatography-mass spectrometry technology, drugs have nowhere to hide, and realize the "hand of technology" to accurately describe the "three-dimensional image" of the drug problem



Fire control

Equipped with gas sampling probe, solid phase microextraction comprehensive pretreatment instrument, thermal desorption sampling system and other accessories to detect on-site combustibles, explosives, and combustion residues, and assist in the investigation of the cause of fire accidents

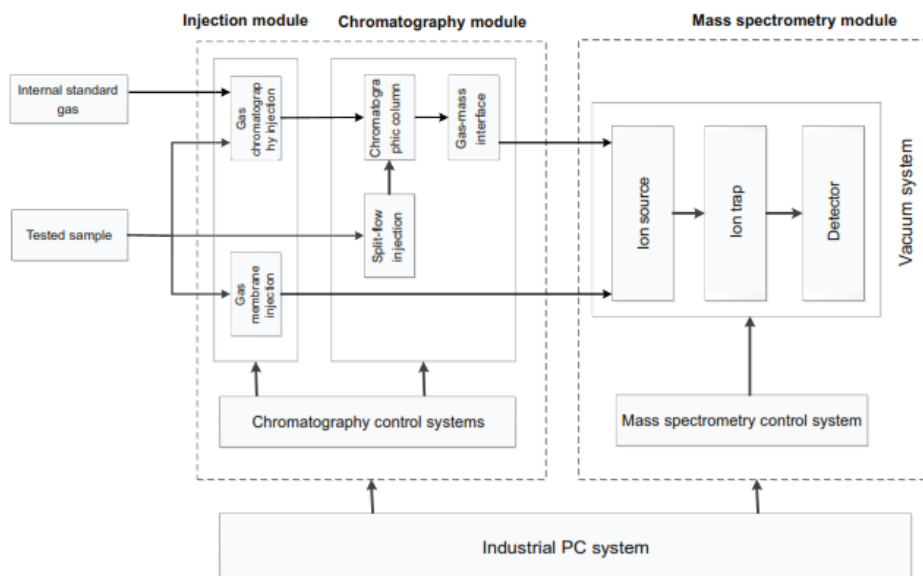


Disease control

Sampling and analysis can be carried out at different locations in the workplace, and the test results can be given quickly. In addition, the product can collect the patient's exhaled breath for qualitative and quantitative analysis to assist in the diagnosis of related diseases.



The 3035 Portable GC-MS consists of an injection system, a gas chromatography module, a gas-mass interface and a mass spectrometry module. The principle of operation is shown in Figure 1: the sample enters the chromatographic separation module through the injection system, where the sample is separated; the separated sample then enters the mass spectrometry module in turn for analysis, and finally the qualitative and quantitative results are obtained through data processing.



Operating Principle

As a new portable GC-MS, the 3035 not only features a stable and reliable instrument with high environmental adaptability, but also has the advantages of fast analysis speed, high sensitivity, high contamination resistance and a wide range of injection methods.

- 1) Fast analysis speed: in addition to the separation efficiency of fast chromatography being 5 times higher than that of conventional chromatography, the membrane injection technique allows the sample to enter the mass spectrometry directly without passing through the chromatography, reducing the response time to seconds, making it very suitable for rapid screening.
- 2) A wide range of testing options: with injection modes such as direct mass spectrometry injection, sorptive thermal desorption injection, quantitative ring injection, headspace injection, needle injection and solid phase microextraction injection, covering all the current sample introduction modes on portable GC-MS applications, it enables fast mass spectrometry with second response, ambient air detection at low concentrations, pollution source detection at high concentrations, VOCs and SVOCs detection in water and soil.
- 3) Environmental adaptability: the instrument can operate at -5°C to 45°C and a low air pressure of 54kPa; it is also waterproof to IP55
- 4) Easy software operation: intelligent wizard-based operation for sample testing and data analysis, greatly reducing training costs and complexity of field use.

5) The ion trap's unique multi-stage mass spectrometry scan mode: SIS scans and MS/MS scans can be performed on substances of interest, which can greatly increase detection sensitivity and reduce false positives.

Performance indexes	Mass range	(15~550) amu		
	Resolution	Better than 1amu		
	Injection mode	Software switchable single mass spectrometry injection, GC-MS internal standard sorbent tube injection, GC-MS internal standard quantitative ring injection		
	Scanning mode	Full Scan, Selective Ion Monitoring (SIM) and Secondary Mass Spectrometry (MS/MS) scanning modes are available		
	Sensitivity	Single mass spectrometric injection	Toluene (5mg/m ³) S/N: ≥10	
		GC-MS sorbent tube injection	Toluene (10ppb) S/N: ≥50	
		GC-MS split inlet injection	Octafluoronaphthalene (100 pg/μL): S/N≥15 (272amu)	
	Single mass spectrometry response time	Toluene 1 ppm: ≤30s; second response time		
	Single mass spectrometry recovery time	Toluene 1 ppm: ≤30s; second recovery to reduce the impact on the next sample		
	Dynamic range	10 ⁷		
	Ion source	EI source, ionisation energy 70eV		
	Detector	Electron multiplier tube		
	Quality analyzer	Ion trap mass analyzer		
	Main unit weight	≤20kg (including gas cylinder and battery)		
System volume	44cm×43cm×22cm			
Anti-vibration grade	Meets the requirements of GJB150.16A-2009			

	Waterproof grade	Meets IP55
	Vacuum	≤3000 μTorr
	Automatic tuning	The instrument can be automatically calibrated on the mass axis of the main unit
	Calibration function	The internal standard can be added automatically and in real time during the analysis of the sample to achieve the calibration function of the internal standard.
	Pre-sampling function	Ensure that each analysis is not affected by the dead volume of the sampling line
	Blowback function	Ensure that the residue of the sorbent tube after each analysis does not affect subsequent analyses
	Carrier gas	Helium gas in a carrier gas bottle built into the main unit
	Sampling flow	Sampling flow is controlled electronically and adjustable
Operating parameters	Power supply	20VAC±10% / 50HZ, or rechargeable battery
	Environmental temperature	-5 to 45°C
	Storage temperature	-20~70°C
	Relative humidity	(0%~95%) RH
	Ambient pressure	May be used in highland areas.54 kPa~101.3 kPa
External communication	Positioning system	PS, BeiDou dual-mode system, switchable; real-time positioning of the sample testing site
	Communication mode	LAN
		WIFI
Software	Database	NIST Standard Spectrum Library
		Automated mass spectral deconvolution and identification system (AMDIS)
		National Institute for Occupational Safety and Health (NIOSH) Database
		Instrument Specific Spectrum Library for Environmental Samples
		Safety Instructions of Chemicals (SIC)
		Environmental Standards Reference Database
	Data acquisition	Built-in IPC with touch screen human-machine interaction;
	Data processing	Built-in IPC; human-machine interaction: touch screen External PC; human-machine interaction: keyboard and mouse

HPLC Servicing, Validation, Trainings and Preventive Maintenance :

HPLC Servicing :HPLC Servicing : We have team of service engineers who can attend to any make of HPLC promptly @the most affordable cost.

Trainings :We also take up preventive Maintenance to reduce downtime of HPLC's Trainings.

AMC's/CMC :AMC's/CMC :We offer user training both in-House and at customer sites on HPLC principles, operations, trouble-shooting.

Validations :Validations :We have protocols for carrying out periodic Validations as per GLP/GMP/USFDA norms.

Instruments :Instruments :We offer instruments/Renting Services Modules like pumps,detector etc. on Rent.



About Analytical Technologies

Analytical Technologies is synonymous for offering technologies for doing analysis and is the Fastest Growing Global Brand having presence in at least 96 countries across the global. Analytical Technologies Limited is an ISO:9001 Certified Company engaged in Designing, Manufacturing, Marketing & providing Services for the Analytical, Chromatography, Spectroscopy, Bio Technology, Bio Medical, Clinical Diagnostics, Material Science & General Laboratory Instrumentation. Analytical Technologies, India has across the Country operations with at least 4 Regional Offices, 6 Branch Offices & Service Centers. Distributors & Channel partners worldwide.

Our Products & Technologies



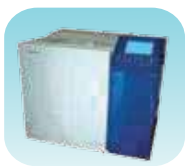
UV/VIS
Spectro 2080+
Double Beam



Infra FTIR



Optima Gas
Chromatograph
3007



Optima Gas
Chromatograph
2979 Plus



Flash
Chromatograph



Atomic Absorption
Spectrophotometer



Liquid Partical
Counter



Optical Emission
Spectrophotometer



DSC/TGA



Semi Auto Bio
Chemistry Analyzer



HEMA 2062
Hematology
Analyzer



Micro Plate
Reader/Washer



URINOVA 2800
Urine Analyzer



Total Organic
Carbon 3800



Fully Automated
CLIA



NOVA-2100
Chemistry Analyzer



PCR/Gradient PCR/
RTPCR



TOC
Analyzer



Laser Particle
Size Analyzer



Ion Chromatograph



Water purification
system

Regulatory compliances



Corporate Social Responsibility

Analytical Foundation is a nonprofit organization (NGO) found for the purpose of:



Analytical
Foundation

1. Research & Innovation Scientist's awards/QC Professional Award : Quality life is possible by innovation only and the innovation is possible by research only, hence ANALYTICAL FOUNDATION is committed to identify such personalities for their contributions across various field of Science and Technology and awarding them yearly. To participate for award, send us your details of research / testing / publication at Info@analyticalfoundation.org

2. Improving quality of life by offering YOGA Training courses, Work shops/Seminars etc.

3. ANALYTICAL FOUNDATION aims to DETOXYFY human minds,souls and body by means of yoga, Meditation, Ayurveda, Health Care, Awards, Media, Events, Camps etc.

Reach us @



Scan Me

HPLC Solutions MultipleLabs Analytical Bio-Med Analytical Distributors Analytical Foundation (Trust)

Corporate & Regd. Office:
Analytical House, # E67 & E68,
Ravi Park, Vasna Road, Baroda,
Gujarat 390 015. INDIA

T: +91 265 2253620
+91 265 2252839
+91 265 2252370
F: +91 265 2254395

E: info@hplctechnologies.com
info@multiplelabs.com
info@analyticalgroup.net
info@analyticalbiomed.com

W. www.analyticalgroup.net
www.hplctechnologies.com
www.multiplelabs.com
www.ais-india.com

Sales & Support Offices:
across the country :
Distributors & Channel
partners World Wide

Note : Company reserves rights to add/delete/modify the contents / technical specifications of the catalogue without prior notice.